



# HAM HUM

Published by  
AK-SAR-BEN RADIO CLUB, INC. - Omaha, Nebr. 68101  
Post Office Box 291 - Downtown Station



Vol. XXV  
No. 2

February 1975

## NEXT MEETING

WHEN: FRIDAY - FEBRUARY 14, 1975

TIME: 7:30 P.M.

WHERE: NATIONAL GUARD ARMORY  
6929 MERCY ROAD, OMAHA

PROGRAM: DISCUSSION OF PROPOSED LICENSE RESTRUC-  
TURING

Panel for the discussion will be Richard (Dick) Pitner, WØFZO, Vice Director, Midwest Division ARRL, and own members Edward C. Eichler, WBØBCB, Arthur R. Gaeth, WØFQB, Alan H. McMillan, WØJJK, and Harry C. Snyder, WØNVE.

HERE IS YOUR OPPORTUNITY TO LEARN WHAT THIS PROPOSAL IS ALL ABOUT.

*H E L D O V E R*

REFRESHMENTS - EYEBALL QSOs - VISITORS WELCOME

\*\*\*\*\*

**HAM HUM** is the official organ of the Ak-Sar-Ben Radio Club, Inc., of Omaha, Nebraska, mailed monthly to all members and to others upon request.



Next copy deadline: February 21st

**Annual Dues:**

Regular member .....\$7.50  
 Regular member and XYL ..... 9.00  
 Student member ..... 3.50  
 (due and payable each Jan. 1)

**Published by**

**AK-SAR-BEN RADIO CLUB, INC.**  
 Post Office Box 291  
 Omaha, Nebraska 68101

**Editor: Dick Eilers, WØYZV**

Phone HOME: 391-2255  
 BUSINESS: 342-1402 - EX. 209

**Associate Editor: John Snyder, WØWRT**

Phone HOME: 556-1538  
 BUSINESS: 397-3000 - EX. 3761

**Associate Editor: Ervan Heinz, WAØEEM**

Phone HOME: 553-2033  
 BUSINESS: 553-4700 - EX. 331

New member initiation fee .....\$1.00  
**Quarterly for balance of year:**  
 Regular member .....\$2.00  
 Regular member and XYL ..... 2.45  
 Student member ..... 1.00

**10/70 REPEATER**

What is your interest in the operation of the RTTY Repeater on 10/70? It is imperative we know your thinking for the benefit of future planning.

Please use the enclosed card for answering the questions listed below or get the information to Leo Connolly, KØJIU, at once.

Do you have RTTY capabilities on 146.10-146.70?

Have you used this repeater?

Do you expect to use this repeater?

Do we have need for a third repeater in the Omaha area on voice?

Should the 10/70 repeater be established for voice and RTTY?

Should the 10/70 repeater be changed to a different frequency for use as a mobile to mobile repeater?

In the operation of a repeater the engineering work is tremendous and the money outlay is considerable. It is necessary, therefore, to have an Page 2

indication of the interest, desire, and need for this 10/70 repeater for the benefit of future planning.

Please use the card enclosed and answer the above questions right now while you are thinking of it and don't forget to mail the card!

\*\*\*\*\*

**NEWS NOTES**

I wrote to you earlier telling you that my call would be changing from WBØDHR/5 to a 5 call number. Well the letter finally came and my new call is WB5MZF. The address is 808 Dakota S.E., Albuquerque, New Mexico.

Right now my rig is a new BC-610-F that runs very nicely (1kw). Thank you and I hope I can contact Omaha for a rag chew sometime (CW).

Robert P. Carrick, WB5MZF  
 \*\*\*\*\*

## QRZed THE NORTH POLE!

By D. H. Filbert (KØAJO)

Two members of the Ak-Sar-Ben Radio Club devoted December 23rd towards making the Holiday Season more merry for pediatric-ward patients at Childrens' Hospital in Omaha and at Mercy and Jennie Edmundson hospitals in Council Bluffs.

Their unique and heart-warming gift was to provide these youngsters with a personal chat with Santa Claus—setting, at the same time, a new record for two-meter DX as the Old Gentleman responded to each boy and girl from his home QTH at the North Pole!

Playing the part of Santa's Helper was Dick Harper (WBØMWB) who personally made the rounds of the three hospitals with his HRT-2 walkie-talkie. The role of St. Nick was ably enacted (Ho! Ho! Ho! and all) by Bill Leatherwood (WAØZUR), who was actually located in his home "shack" at Bellevue.

Approximately 50 children, ages two to seven, were given an opportunity to chat with Santa before the lateness of the hour brought these activities to a close.

One tiny tot, just removed of her tonsils, refused to speak to her mother but eagerly babbled her Christmas gift-wishes into the microphone. And, so that no one would be excluded, another youngster — confined to an isolation ward — was given the entire rig to operate, sealed in a sterilized plastic bag.

The writer of this article — monitoring these transmissions over the Council Bluffs repeater and

February 1975



This little lady suffers no "mike fright" as she talks with Santa Claus via two-meter radio.

silently applauding Dick and Bill for their thoughtfulness — was privileged to make a very minor contribution towards the success of this project.

Armed with a touch-tone pad (which neither "Santa" nor his "Helper" possessed), he was kept busy punching the pound sign to eliminate the dial tone as fast as it was brought up by the high-pitched voices that repeatedly activated it!

\*\*\*\*\*

## ATTENTION CW OPS

Anyone interested in joining the Amateur Radio Telegraph Society (ARTS) can do so by sending one dollar to:

ARTS  
PO BOX 1553  
Silver City, New Mexico  
88061

From KØKKP  
\*\*\*\*\*

HAM HUM

Page 3

## SNOW STORM

Little did we know that Friday, January 10, 1975 would bring one of the worst blizzards we have seen in a quarter century.

The A.R.E.C. of Douglas County activated Friday afternoon with WØYDV, John as NCS; as relief were WBØCMC, John and WAØDHU, Bob.

During the course of the afternoon the Red Cross was notified we were ready in case the need should arise. The main problem confronted was the lack of mobility. It was virtually impossible to commute. Many were stranded and were forced to find shelter in the vicinity in which they found themselves. We kept a close watch to be sure everyone was safe in a shelter.

Many say we should have done more during the storm but looking back on the storm and its impact on our community, I think we did well to stay off the streets and to encourage incoming travelers to find shelter as soon as possible. However, the storm opened our eyes for better preparedness for possible future major storms.

Bob Lockwood, WAØDHU  
\*\*\*\*\*

## DUES ARE DUE

If you have not already paid your 1975 Club dues, please do so immediately by sending your check or money order to Ak-Sar-Ben Radio Club, Inc., P. O. Box 291, D.T.S., Omaha, Nebraska 68101.

Your cooperation in promptly remitting your dues will save your Club considerable time and expense.  
\*\*\*\*\*

## MEMBER NEWS

Hope to be operating on Montserrat the last two weeks in February as VP2MDB. Will be on 10, 15 and 20 meters days; 40 and 75 nights—SSB.

Dave, KØVVO  
\*\*\*\*\*

Omaha, Nebraska  
Jan. 10, 1975

Dear Friends:

Enclosed are my dues for 1975. Now tell me if there is a member who remembers the Hammerlund HQ 145? Mine has been in the shops so long gathering soil, all for the need of an IF transformer coil. The Hammerlund number is K26402-1. It is called in their manual as an IF transformer, composite. The bottom slug adjustable to 3035 Kcs., the top slug to 455 Kcs. In QST Dec. 1974, page 173, an operator WA1LXW, School St., Kingfield, Maine 04947, has an ad and he needs one too. Anybody have a junker or those parts, help two of us at once.

He is looking in the East, I'm looking in the West. Help!

Jim Lafferty, Sr.  
3409 Burt St.  
Omaha, Neb. 68131  
Phone: 556-6988  
\*\*\*\*\*

The most successful man is the man who holds onto the old just as long it is good and grabs the new just as soon as it is better. — Service  
\*\*\*\*\*

## RECENT CONTRIBUTORS

### Repeater Fund

Rev. James R. Belt, WAØJIH  
David Benton, KØVVO  
Charles B. Juvenal, KØKKL/WAØURF  
Jay M. Kaiser, KØIPV  
Charles F. Kelly, WAØUZX  
Paul Sherrerd, WBØBKZ  
Mary Lou Sherrerd  
Raymond F. Kydney, WAØWOT

### Autopatch Fund

Ronald E. Hester, WNØMUB  
Charles F. Kelly, WAØUZX  
Paul Sherrerd, WBØBKZ  
Mary Lou Sherrerd  
Raymond F. Kydney, WAØWOT

Sincere thanks to all!

\*\*\*\*\*

## NEWS FROM FORMER OMAHAN

Ak-Sar-Ben Radio Club: My memories of the Club are still strong, and I find your monthly booklet good for information.

I'm operating at 2 radio stations just now, KANW, a public school station, and KOB on the night shift for NBC.

To get my first class ticket, I'm going to Albuquerque Technical and Vocational Institute.

Yours,  
Robert P. Carrick  
WB5MZF (Ex-WBØDHR)  
808 Dakota, S.E.  
Albuquerque, NM 87108

\*\*\*\*\*

## GUEST EDITORIAL

By Lee Wilson, W4KUD

It has come to my attention while tuning forty meters of an evening, that I have found an abundance of brash, out-spoken young and I use this next term loosely, gentlemen, expounding on how other radio amateurs choose to operate while "on-the-air." I have little desire to criticize since I find too many inadequacies within myself. However, should the occasion arise that a fellow ham is something less than the epitome of amateur radio operation I would consider this a delicate matter and conduct myself as a gentleman rather than a holier than thou advocate of supreme intellect. What I'm trying to convey is simply this: if I notice a fellow ham in error on procedure or protocol I may very politely render some sort of kind and thoughtful advice in as delicate a manner as possible. I would never laugh at him on the air or call another ham on freq. regarding his methods. It seems to me that all too often I hear some smart mouth, twentish radio operator making a rather large spectacle of a small thing when all that would be necessary would be a short, kind, word of advice.

I don't flatter myself with any thoughts of splendor. I may be mediocre at best. However, ham radio has been my hobby for many years and it behooves all of us to treat our favorite pastime with dignity and courtesy at all times.

de Florida Skip

\*\*\*\*\*



PHOTOS FROM  
ANNUAL MEETING  
AND CHRISTMAS PARTY  
DECEMBER 13, 1974



Photos by Jon Penner, WBØGQT

## REPEATER RULES AND PROCEDURES

A repeater is intended to serve stations that cannot communicate on direct (simplex) channels and to provide a calling frequency for all stations. SINCE MANY STATIONS MONITOR AND/OR USE A REPEATER, CERTAIN RULES AND PROCEDURES MUST BE OBSERVED to ensure orderly operation and meet FCC requirements.

Courtesy and a genuine effort on every operator's behalf will improve operation for all.

### REPEATER DO'S

1. Listen before transmitting to see if the repeater is in use. If busy, determine who is in conversation before transmitting. Always consider whether interruption is appropriate.
2. Let the repeater's output carrier drop (go off) before you transmit. Approximately 1 to 2 seconds delay is required between transmissions to reset the 3 minute timer on the repeater's carrier output.
3. Keep transmission short and identification to a minimum. A timer also limits any single transmission from the repeater.
4. Immediately acknowledge breakers.
5. When breaking, give your call. Don't say, "Break, Break."
6. Always turn the next transmission to a specific station. If you don't know the next sequential station to transmit, turn it over to someone in the roundtable dis-

cussion whose call you do know. Don't say, "Someone pick it up - this is W2LID. Go ahead."

7. Always identify your station. Brief tests are permitted if the station that is testing identifies itself.
8. Stand by during an emergency unless you are specifically called or have priority traffic or information.

### REPEATER DON'TS

1. Don't use the repeater for any business purpose whatsoever.
2. Don't key up the repeater unless you intend to identify your station. Besides being unlawful, unidentified keyups irritate the control operator and all stations monitoring the repeater.
3. Don't call the control operator unless a *serious* emergency exists and no other station can assist.
4. Don't call CQ. FM is a channelized system and a short statement that you are monitoring the repeater is sufficient.
5. Don't make frequent, unnecessary calls. Two calls are sufficient in a five-minute period to contact a specific station.
6. Don't excessively identify when in QSO.
7. Don't transmit on a repeater frequency while the repeater is enabled. FCC regulations require repeater stations to suspend operation if their output frequency becomes occupied before keyup. (For example, a Webster station keying the repeater may not hear you using the repeater

S.E.T.  
SATURDAY, JANUARY 24

output frequency simplex if you are in Chili.) Furthermore, once a repeater is transmitting, the FCC prohibits other stations from transmitting on the repeater's output frequency.

Don't work DX repeater operating on the same frequency as a local repeater while the local repeater is enabled. According to the FCC, repeaters are to provide intra-community coverage only. Simultaneous keyup of two or more repeaters should be avoided.

9. Don't leave your transmitter unattended and accessible to unlicensed persons who can merely turn on a switch or depress a mike button to activate your station. Mobile rigs must also be protected by locking your car.
10. Don't use the repeater to work base station to base station if stations can communicate on a simplex channel.

**REMEMBER:** The repeater is being monitored at all times by a control operator who is donating his time to make the repeater available for your use. Your consideration for the control operator can best be observed by following procedures. It will help the control operator meet his obligation to the trustee and the FCC...

...and it will improve operation and communications for every station using or monitoring the repeater.

de RaRa Rag, Rochester, N.Y.  
\*\*\*\*\*

If you want to leave your footprints in the sands of time, wear your work shoes. — Service

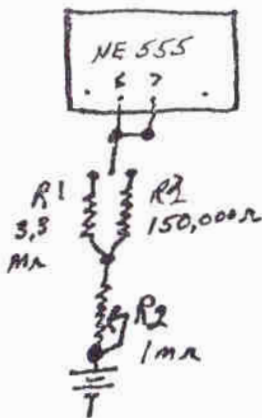
The 1975 Simulated Emergency Test will have been completed by the time this issue of Ham Hum is released. The test will center around a major snow storm in Grand Island which will paralyze the town for several days. Douglas County A.R.E.C. in conjunction with the Red Cross look forward to this test. Many A.R.E.C. members are urged to monitor 16-76 or 3982 KHz or 34/94 during this test. It promises to be a good test and we are ready.

Bob Lockwood, WAØDHU  
\*\*\*\*\*

Ref Timer Page 11 Jan. Ham Hum.

Modified to make a 10-minute or a 1½-minute timer for the repeater. Install S.P.D.T. switch between Pin 6 and R1; add R3 A 150,000Ω. With R1 and R2 adjusted for ten minutes, R2 and R3 are set for 1 minute 23 seconds.

Circuit by Lynn (WAØODH)  
modification by Harp (WBØMWB).



\*\*\*\*\*



# HAM HUM SWAP

FOR SALE: 1 - FM210, AC supply, crystals for 34/94, 94/94 and 76/76 - \$175.00

1 - G1000 DC power supply DC power supply for Galaxy transceivers - \$85.00

Royce E. Johnson, WAOJKIL  
2424 South 46th Avenue  
Omaha, Ne 68106  
Phone: 558-4941

FOR SALE: (1) Johnson Ranger 1, Mint Condx.

Jerry Novotny, KOKKP  
5450 So. 50th Ave.  
Omaha, Nebr. 68117  
731-0161

FOR SALE: Heath Station Control SB-630. Factory wired. Never used. Heath Watt Meter. Wollensak Stereo Reel, new unused bargain.

Bob Miller, KQZLY  
4302 Dodge Street  
Omaha, NE 68131  
556-7000 & 556-3478

WANTED: To buy, borrow or copy manual for RCA WV-97A Senior Volt Ohmist.

Mark M. Ellingson, WNOMFP  
214 North 6th Street  
Plattsmouth, Nebraska 68048  
Phone: (402) 296-6233

FOR SALE: Oscar 6 & 7 Satellite Tracking calculator from Jan. 1975 "73." I made up a bunch. To recover cost and time, will sell for \$2.00. Works!

KODNV  
Plattsmouth, NE 68048  
Phone: 296-4145

FOR SALE: Riders manuals, Vol. 2 to 6.

Harry Hamilton, KQUDI  
4736 North 37th Street  
Omaha, Nebraska 68111  
Phone: 455-0812

FOR SALE: 1974 U. S. Callbook - \$5.00  
1974 DX Callbook - \$4.50  
Both in press condx!

WBØGAJ  
Phone: 339-2162.

WANTED: All Band SSB Transceiver.

Russ Hagenbucher  
2016 Clarmar  
Fremont, NE 68025  
Phone: (402) 721-0972

\*\*\*\*\*

## A.R.E.C. NEWS RED CROSS TRAINING

On Thursday evening, January 9, 1975, 17 members of the Douglas County A.R.E.C. received training in survey teamwork by a national representative of the American Red Cross. During this session, many ideas were given which lead to a much more efficient team of volunteers who will be a very valuable asset in the initial assessment of the needs of a disaster area if the need should arise.

Thanks to all who took part in this training session. There will be a follow-up simulated test in the near future.

The Douglas County React Club also had 18 people at the session. They likewise are prepared for the field test.

Bob Lockwood, WAØDHU

\*\*\*\*\*

## BABY'S FIRST WORD

There has been a dispute in the ØLHC family over seven-month old Patrick Michael's first vocalization of "dad-dah-dah-dah-dah-dah" as being an attempt to call which parent?

WAØLHC

\*\*\*\*\*

*February 3, 1913*—The Sixteenth (Income Tax) Amendment to the Constitution became law.

*February 4, 1861*—The Confederate States of America were formed at Montgomery, Alabama.

*February 7, 1936*—President Roosevelt issued an order creating a flag for the office of the vice president.

*February 14, 1903*—The Department of Commerce and Labor was created by President Theodore Roosevelt.

*February 18, 1930*—The planet Pluto was discovered by the astronomer Clyde W. Tombaugh, working at Lowell Observatory, Flagstaff, Arizona.

*February 22, 1953*—A voluntary program of health insurance to be financed by federal, state and municipal funds was recommended by President Harry S. Truman's Commission on the Health Needs of the Nation.

\*\*\*\*\*

# Introducing the 5 BAND ATLAS-210

SOLID STATE SSB TRANSCEIVER

200 WATTS\* P.E.P. INPUT . . . 10,15,20,40, and 80 Meters



**\$599**

...And the companion model, Atlas-215, which covers  
15, 20, 40, 80, and 160 Meters.

- \* **Frequency Ranges, Atlas-210:** 3700-4050, 7000-7350, 14,000-14,350, 21,100-21,450, and 28,400-29,100 KHz. Model 215 deletes 28,400-29,100 band, and instead covers 1800-2000 KHz.
  - \* **Power Rating:** 200 watts P.E.P. Input and CW Input. \*On 10 meters the power rating is 120 watts.
  - \* The same outstanding performance, reliability, and compact size as the Atlas-180 . . . Only 3½ in. high, 9½ in. wide, 9½ in. overall depth, and only 7 lbs. total weight . . . Operates directly from 12-14 volts D.C. All solid state, modular construction . . . No transmitter tuning (special Braille dial available for blind operators at no extra cost).
  - \* **Plug-In Design,** for quick removal from mobile mounting, and insertion into AC Console as illustrated.
  - \* **Prices**
- |                                    |       |
|------------------------------------|-------|
| Model 210 or 215                   | \$599 |
| AC Console, 117 volts 50-60 cycles | \$129 |
| AC Console, 117-230 volts          | \$139 |
| Mobile Plug-in Kit                 | \$ 44 |
| D.C. Battery Cable                 | \$ 12 |
| Mobile Bracket Kit                 | \$ 6  |
| Mobile Antenna Transformer         | \$ 24 |



**Hobby  
Industry**

AMERICAN MADE AND GUARANTEED BY



**ATLAS  
RADIO INC.**

HOBBY INDUSTRY, 16 TH & AVE. 'O', Council Bluffs, Ia. 51501  
MAIL TO BOX 864, PH. 323-0142  
STORE HOURS ARE: TUES.-WED.-FRI. . . . . NOON TO 5 PM.  
THURS. NOON TO 8 PM & SAT. 9 AM TO 5 PM.